



Interoperability 101: What You Need to Know in Kansas

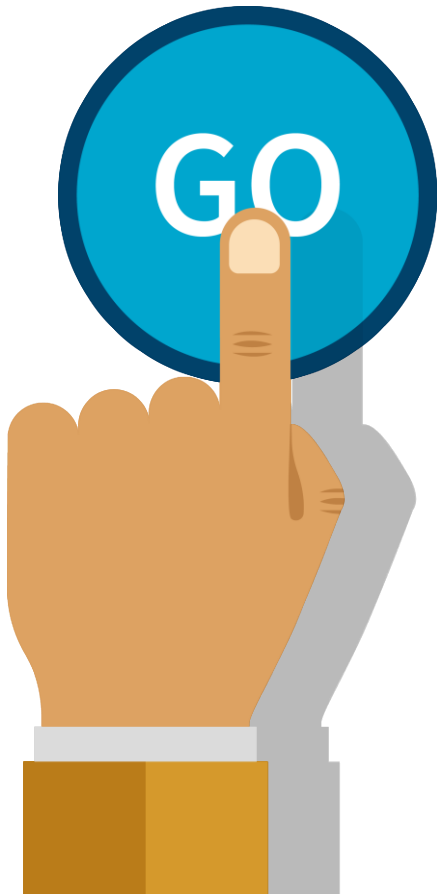
Understanding the Basics

Today's Presenter



Jeff Clair
Project Manager

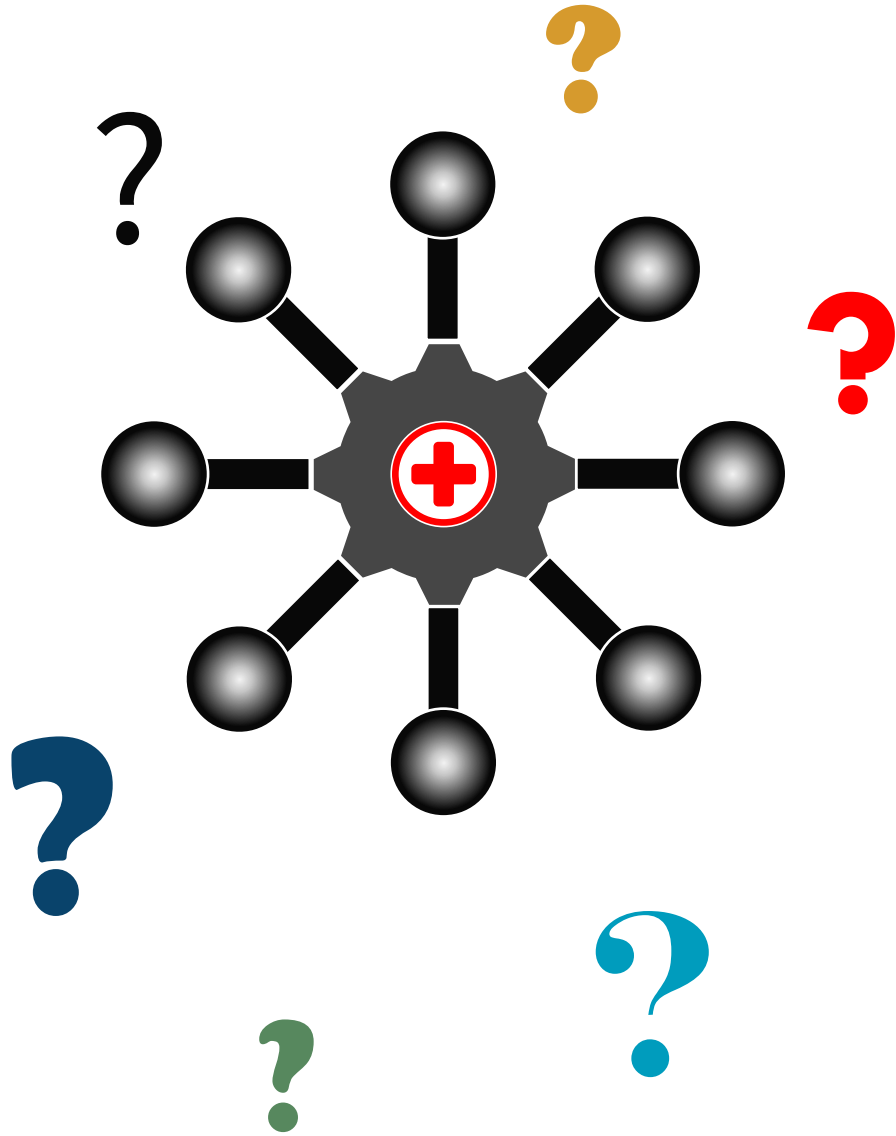
Today's Agenda



Interoperability Defined

What Interoperability Means for Me and the People I Support

What I Should Be Doing About Interoperability



Interoperability Defined

Modern Problems

KAMIS


sunflower
health plan.

KANSAS
WebIZ 
Immunization Information System

 United
Healthcare



 **aetna**TM

Aetna Better Health[®] of Kansas


KanCare
Medicaid for Kansas

KHIN 
KANSAS HEALTH INFORMATION NETWORK

 **medisked**

The average waiver enrollee accumulates over 40 new service access specialist documents per year for waiver services alone!

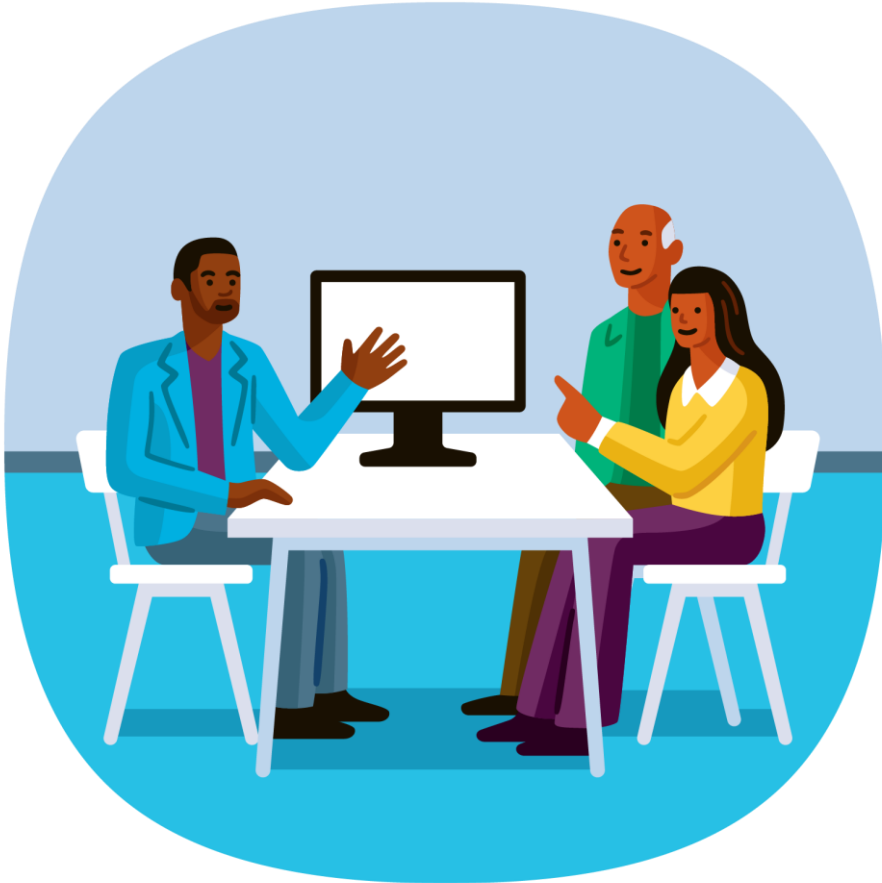
With over 8,600 people on the I/DD waiver in Kansas, that's over 344,000 new documents/year that could be interoperable



Modern Solutions



What is Interoperability?



The ability of different information systems, devices and applications (systems) to **access, exchange, integrate** and **cooperatively use** data in a coordinated manner, within and across organizational, regional and national boundaries, to provide timely and seamless portability of information and optimize the health of individuals and populations globally. ¹

OK – Interoperability Seems Great, But What is it Really?

- Interoperability is the way products and systems communicate data, where interfaces of those solutions are universally understood.
- This will allow multiple systems to work with each other, without any restrictions, and with proper permissions.

Permissions

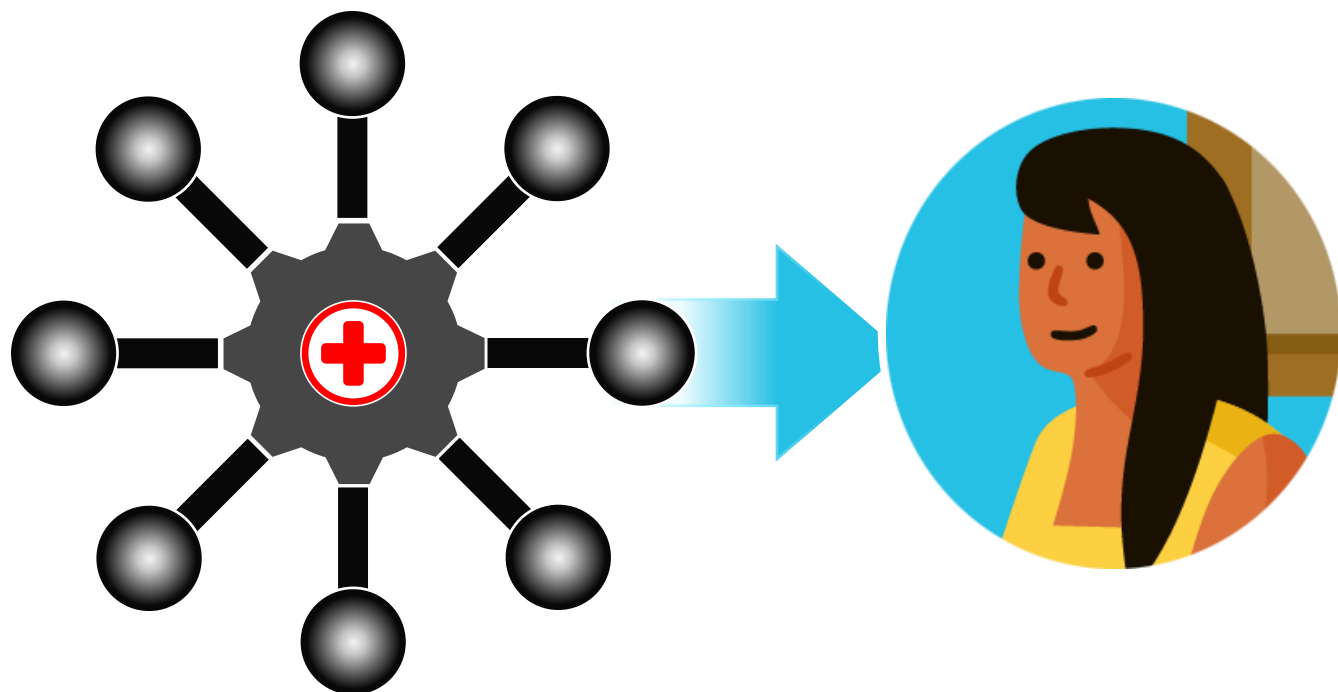
- Users have proper authority to access and exchange the information, for example:
 - The patient
 - The provider and the provider's EMR
 - The lab processing system that receives lab orders from the provider via the EMR.
- I.e., “Consent Exists”

Without any restrictions

- No unnecessary
 - Fees
 - Delays
- Cannot only allow exchange with
 - In-network providers
 - Certain software applications

Why Do We Need Interoperability?

- Puts **individuals first**, giving them access to their health information when they need it most and in a way they can best use it.
- Promotes **transparency** through technology, providing opportunities for providers to gain visibility into the range of care and services an individual is receiving.
- Fosters **innovation** in health and human services to deliver better information, more conveniently, to both patients and their providers.



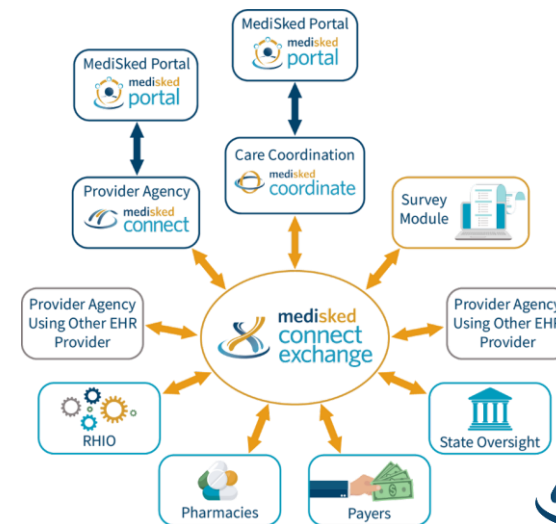
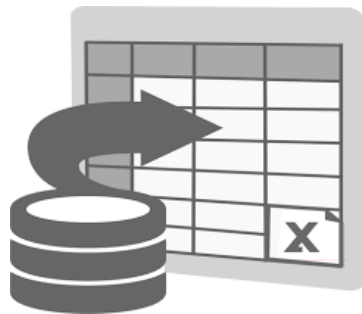
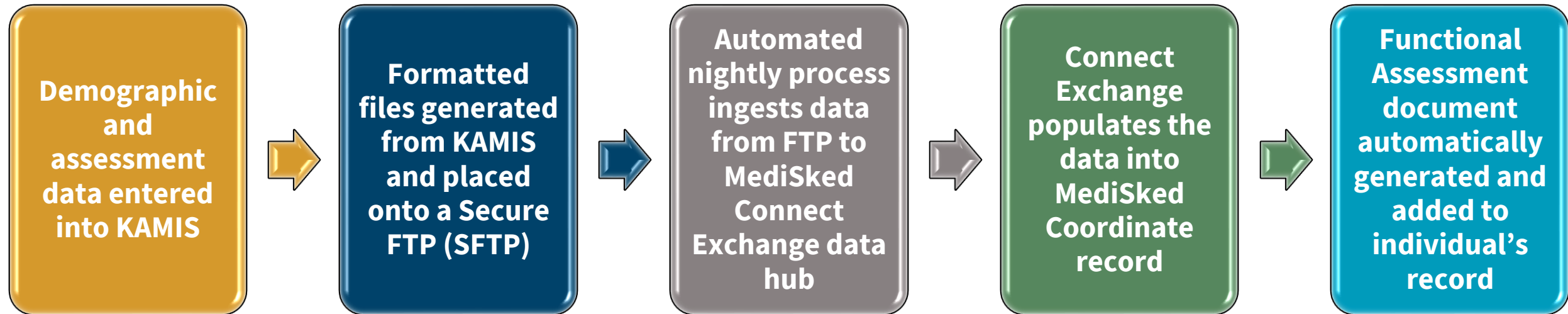
**What Interoperability
Means For Me and the
People I Support**

MediSked Systems Interoperability/Integration in Kansas



MediSked Systems Interoperability/Integration in Kansas

KAMIS Data Ingestion



A screenshot of a "Functional Assessment document" form. The form includes fields for patient information, assessment details, and a section for "Functional Assessment" with various checkboxes and text areas. The title at the top is "Kansas Department for Aging and Disability Services".

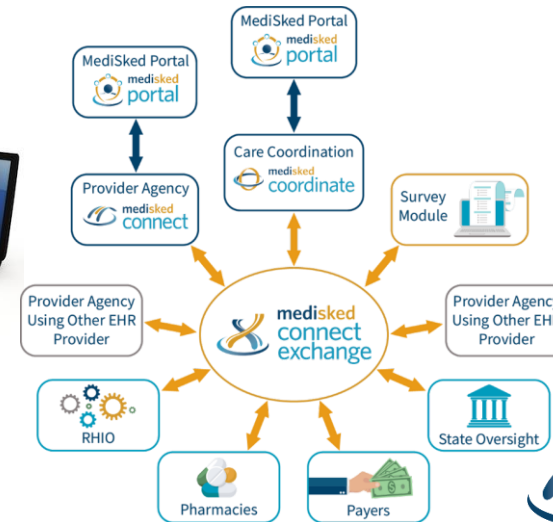
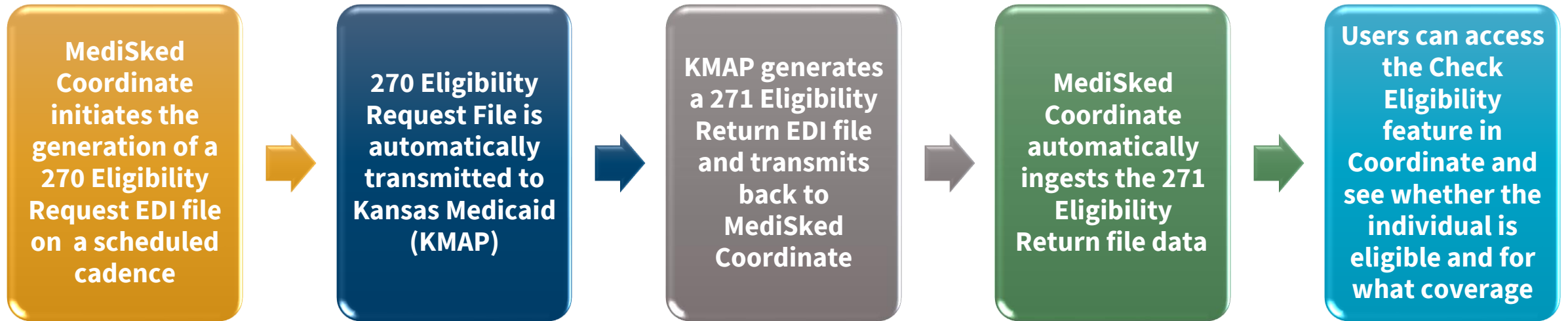
MediSked Systems Interoperability/Integration in Kansas

KAMIS Data Ingestion

- Benefits of KAMIS Data Ingestion integration
 - CDDO is in control of their data- they can choose what data to ingest and what fields each data element should populate to in Coordinate
 - CDDO chooses how frequently they would like files ingested from the SFTP
 - Reduces the need to enter the same data multiple times into different systems
 - Ensures that the data in Coordinate matches the data in KAMIS
 - Completed Assessment Document automatically generated upon data ingestion and placed in the individual's EHR file
 - Assessment Documents can be shared to the MediSked Person Centered Portal to allow access to the individual, their providers, and circles of support when the individual receiving services grants permission

MediSked Systems Interoperability/Integration in Kansas

KMAP Eligibility Interface



MediSked Systems Interoperability/Integration in Kansas

KMAP Eligibility Interface

Eligibility Details

This information was generated by the HIPAA-271 - Health Care Eligibility, Coverage or Benefit Information EDI File

ELIGIBILITY INFORMATION

Exception Code(s):
[A1 Code](#), [A2 Code](#), [H1 Code](#),
[H3 Code](#), [CM Code](#), [B1 Code](#),
[Z4 Code](#)

Date of Verification:
09/30/2018

Recert Month:

ACTIVE COVERAGE

- Health Benefit Plan Coverage - General healthcare benefits for the member's policy or contract
- Case Management - Services that assesses, plans, implements, coordinates, monitors, and evaluates the options and services required to meet the client's health and human service needs

Check Eligibility

Start Date:
12/24/2018

End Date:
1/23/2019

Member Name:
Select One

Care Manager:
Select One

Eligibility:
Select One

Demographic Match:
Select One


View Uploaded 271 Record:
Select One

FILTER

OPTIONS

Code A1: Health Home Program - Care Management Agency - Member is assigned, in outreach, or enrolled with a Care Management Agency

OK



MediSked Systems Interoperability/Integration in Kansas

KMAP Eligibility Interface

- Benefits of 270/271 Eligibility Interface with KMAP
 - File interface is automated, and no action needs to be taken by the CDDO to transmit and return files
 - CDDO chooses how frequently they would like this interface run
 - In addition to standard Medicaid eligibility, you can see more in-depth information on coverage and exceptions
 - EDI interfaces are HIPAA compliant, safe, and secure
 - A broad range of search/filter options make finding the information you need quick and easy
 - Eligibility reports are exportable into Excel or PDF

What Does Interoperability Mean for Me and the People I Support?

Individual Perspective



- Allows me to be the center of my own experience of care
 - I select the additional providers who can see my information
 - Not a one-time decision. I can always change what I would like to share
- Client experience aspect
 - I don't have to tell my story from the beginning every time I speak with my Service Access Specialist
 - I don't have to re-live my previous experiences unless truly necessary



What Does Interoperability Mean for Me and the People I Support?

Provider Perspective

- As a **service provider**, I can see where my individual received healthcare, what was ordered, who ordered it, and any related results – with no special effort.



- As a **healthcare provider**, I can see where my patient received services, what type of services, charts, and progress toward goals – again, with no special effort.

What Does Interoperability Mean for Me and the People I Support?

CDDO Perspective

- As a **service access specialist**, I don't have to wonder if an individual received a service -- I can see it. I can also be alerted to new information, like a hospitalization, and I can see the discharge instructions – yet again, with no special effort.
 - I can also ingest demographic and functional assessment information from KAMIS to alleviate duplicate entry
- As an **oversight agency**, I can gather data in one centralized data hub for reporting and data analysis
 - I can also create and share dashboards and visualizations from the data to see the bigger picture

Another Example of Interfacing Possible in KS:



- Service Access Specialists get real time notifications of hospital admissions within the platform
- Christine (SAS) is notified that Eliza is in the hospital – right on the main screen in the platform

- Christine sees that Eliza has broken her leg
- Eliza works on preparing meals for herself and gets support with this three times a week
- Christine is concerned that learning to prepare meals AND handle crutches in the kitchen may take some time
- Christine arranges a meal service for two weeks
- Christine then uses the MediSked Portal to message the entire care team re: Eliza's updated plan

Additional Use Cases


[top](#) The Washington Post

Beneath a green sky, my encounter within a quarter-mile of a Kansas tornado

My storm chase in northwestern Kansas on Monday proved wild, featuring an up-close tornado intercept, destructive winds and skies that had...

May 25, 2021

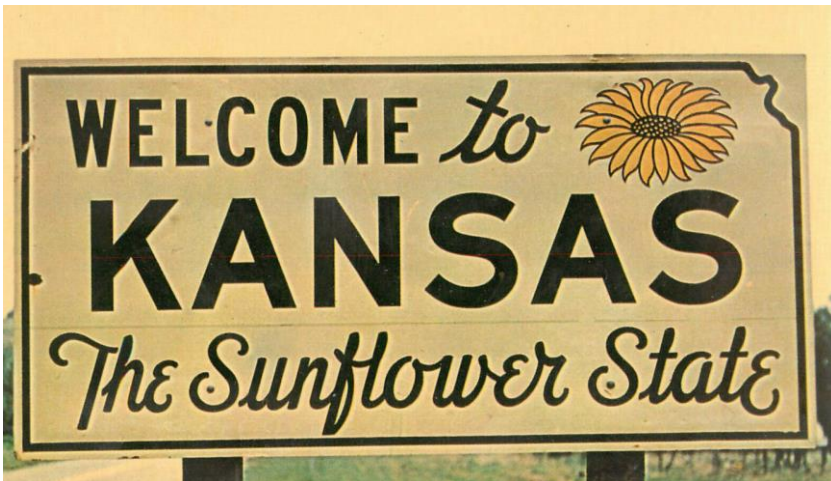


 KSN-TV

KDHE reports 1,817 more coronavirus cases in Kansas, 25,000 more vaccinations

WICHITA, Kan. (KSNW) — The number of Kansans lining up to get vaccinated against COVID-19 increased over the weekend.

52 mins ago



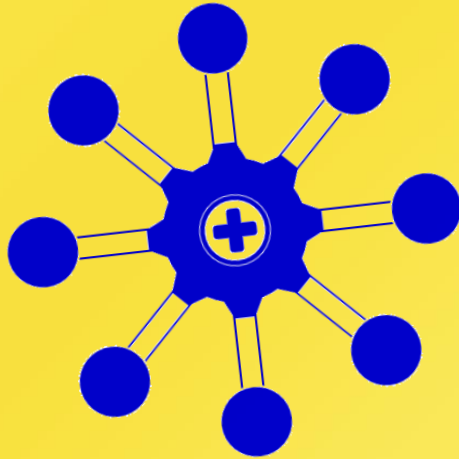
**VALUE
BASED
CARE**



 medisked

☐ To Do

Interoperability...?



What You Should Be Doing About Interoperability

What Can I Do Today?

- **If you are a decision maker or a decision influencer at your organization:**

Think about how easy it is for your care providers/managers to get data from other parties.

- Is it an easy part of their workflow?
- Are you leveraging data sharing that your vendor is offering today?

- **If you are thinking about an upgrade:**

- Does the vendor have a plan to support FHIR?
- Does the vendor use APIs to exchange records?

Interoperability Security Checklist

- **Security Risk Analysis**
- **Audit Logs & Reports**
- **End-User Device Encryption**
- **Access Control**
- **Automatic Timeouts**
- **Data Integrity**
- **Trusted Connections**
- **Data Encryption**
- **Data Hashing**
- **Disclosure Tracking**



Sources: https://www.cms.gov/Regulations-and-Guidance/Legislation/EHRIncentivePrograms/Downloads/MedicareEHStage3_Obj1.pdf
<https://www.cms.gov/files/document/security-risk-analysis-fact-sheet.pdf>

Interoperability Security: General

- **Interoperability Security is an AND, not an OR**

- Protect information WHILE sharing
- Still providing Confidentiality, Integrity, and Availability
- Focused on the Individual's outcome

- **Identity is the Perimeter**

- “Trust but Verify”
- True for all Cloud-Based* computing

- **API Security**

- **Cyber Basics Still Matter**





Review

In Review

- **Defined Interoperability**
Definition, Solutions, Terms, History
- **What Interoperability Means for You**
Individual & Provider perspectives
- **Discussed Interoperability for HCBS/LTSS**
MediSked example, Additional Use Cases
- **What You Should Be Doing About Interoperability**
What to look for, Security Checklist, General Security Considerations

Questions?



Jeff_clair@medisked.com



medisked.com